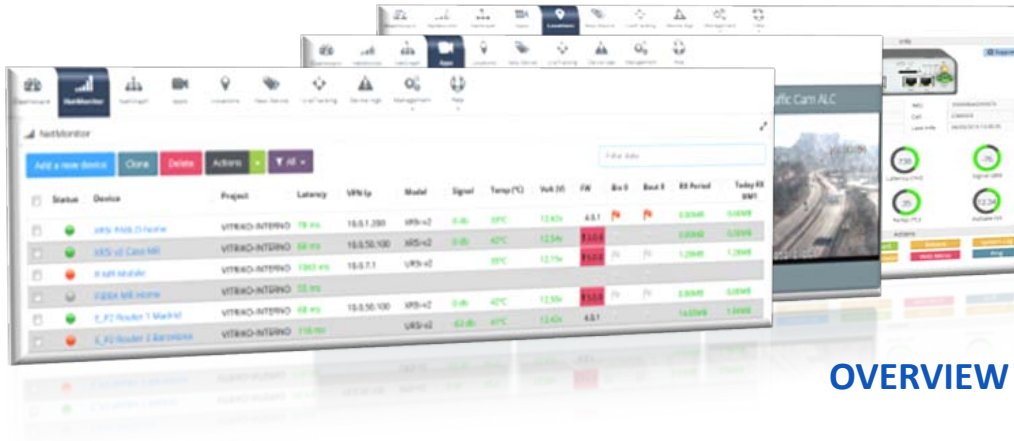


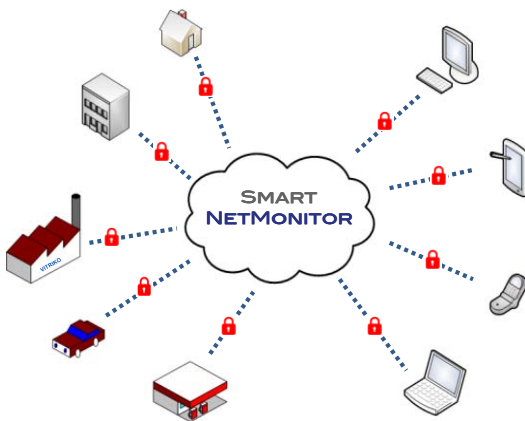
## ONE M2M PLATFORM FOR YOUR ENTIRE NETWORK



Get quickly the **OVERVIEW** of your devices

**SMARTNETMONITOR** is a web platform created to centralize the supervision and control of a M2M routers network in a **single, robust and secure environment**. It is designed to be the **control room** for any IoT application.

Based on latest web technologies, our platform allows the users to have access to the routers configuration, devices and its applications. Full compatible with the VPN solutions **Digicluster** and **SmartCluster**.



**SMARTNETMONITOR** is located on a high performance cloud center, always available from every Internet connected **smartphone, tablet or PC**, at any web browser. An installation on customer's Data Center is also possible.

All data will be collected and stored for future supervision and reports.

Cost reduction, data and applications centralized, always online, global access, better response time on supervision and maintenance, fast implementation...

It is simple and scalable. If your network grows, **SMARTNETMONITOR** grows with you.

### HIGHLIGHTS

What a network manager needs...and more!

- Live **GPS tracking**
- **Massive Configuration**
- **Alarms and reports**
- Customizable **applications**:
  - Peripheral devices
  - Cameras, sensors, datalogger...
- **Hierarchy projects** management
- **Hierarchy users** management
- **Remote diagnosis**

## FEATURES

### Your Control Room

Manage all your network

- Routers management
- Massive configuration and deployment
- Customizable Dashboard and widgets
- Operations & Maintenance
- Device logs and configuration backup
- Location for better time response on service
- Customized data layout
- Remote actions: Ping, reboot, report log, system log, digital input/output control...
- Automatic remote FW update
- Automatic remote Configuration



### Get statistics

- Temperature
- Voltage
- Signal level (average, maximum and minimum)
- SIM connections
- Digital inputs/outputs
- Network type
- Daily cells changes



### Security

- https and double check login
- Devices inventory: White & black list
- VPN SmartCluster-Digicluster optional
- Redundant servers for non stop service
- Hosted at a Tier 4 datacenter

### Manage your M2M Network

Real-time monitoring of the status and properties of all routers

- Status: online/offline
- Signal level and latency
- Location maps
- Volume of TX/RX data
- Direct access to router web menu
- Installation date and notes
- Operator information: PLMN, channel, cell, phone number, PIN, PUK, IMEI
- Download reports and logs

### Get Alerts

Configure alerts to get emails and SMS if:

- Router offline
- Power supply voltage under a certain value
- Temperature under/above a certain value
- Digital Input value change
- Poor signal
- Firmware version
- Property variations

## DEVICES SUPPORTED

SMARTNETMONITOR supports the B+B SmartWorx [Conel product line](#) 2G/3G/4G routers and the new [Wzzard Intelligent Sensing platform](#)

More info: [www.SmartNetMonitor.com](http://www.SmartNetMonitor.com)

## OUR TECHNOLOGY PARTNERS

